

FREE SELECTION OF THE PRESSING TOOLS!
LEAK PATH FEATURE!



SANHA[®]-Press

12 mm – 108 mm

SANHA[®]

www.sanha.com

SANHA[®]-Press - FULL COMPATIBILITY OF TOOLS - WITH GUARANTEE

✓ Full compatibility!

SANHA[®]-Press can be pressed with all pressing jaws and tools provided for the metal connections Type M-MM (to 54 mm inclusive)

✓ Secure leak path feature!

The **SANHA[®]-Press** pressfitting is designed to visibly leak before it is crimped. We guarantee that!

✓ Particularly round press formation!

- 8 Points to 35 mm
- 9 Points to 54 mm
- Lemon shape profile to 108 mm

Through the conic pipe deformation, **SANHA[®]-Press** is also secure against extraordinarily high pressure pulses.

✓ No installation without guarantee!

SANHA[®] is fully liable for the tightness of connection!

✓ Many certifications!

SANHA[®]-Press is certified by all important international certification agencies, in particular by WRAS/WRc, Advantica and British Gas.

✓ Wide assortment for drinking water, heating, gas, solar and compressed air!

SANHA[®] offers not only full compatibility at crimping and high pull-out values without aid resources, such as toothed washers or similar, from 12 mm to 108 mm, but also pressfittings available in stock for every area of application.



8-Edge profile
12 mm to 35 mm



9-Edge profile
42 mm to 54 mm

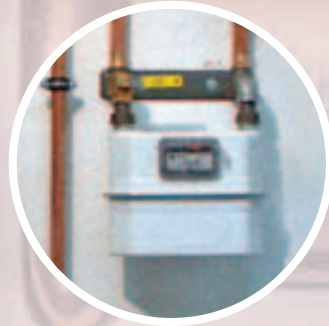


Lemon shape profile
64 mm to 108 mm



THE CORRECT FITTING FOR EVERY APPLICATION

Whether for drinking water, heating, gas, compressed air or solar thermal power, **SANHA®** offers you the correct solution for every field of application.



SANHA®-Press pressfittings of copper (series 6000) and gun metal (series 8000) for drinking water and heating installation

SANHA®-Press pressfittings of the series 6000 and 8000, together with copper pipes, are tested according to BS EN 1057 and suitable for:

- Drinking water and fire-extinguishing lines, in accordance with BS EN 806
- Heating water
- Water-glycol mixture (water with frost protection addition)

SANHA®-Press Gas pressfittings of copper (series 10000) and gun metal (series 11000) for the gas installation

SANHA®-Press Gas pressfittings of the series 10000 and 11000 are additionally marked on the outside by color stamp.

According to BS, in association with copper pipes suitable for gas, they are applied for the following:

- Natural gas and liquid gas
- Lines within buildings up to PN 5
- Freely laid outside lines up to PN 5

SANHA®-Press Solar pressfittings of copper (series 12000) and gun metal (series 13000) for solar thermal energy plants and compressed air lines

The **SANHA®-Press Solar** pressfittings of the series 12000 and 13000 are additionally marked on the outside by color stamp.

In association with copper pipes according to BS EN 1057, they are suitable for:

- Solar energy circuits to 200°C (short-term to 280°C), dependent on the medium
- Special applications in industry
- Compressed air (also containing oil)
- Other oil containing media e.g. drilling and cutting emulsions and similar

In case of further questions for the areas of application of the pressing systems, please refer to our application consultation under 01494 / 484255

SUITABLE CONVENTIONAL AND ELECTRONIC PRESSING TOOLS FOR SANHA®-Press

Conventional pressing tools

Acceptable pressing jaws and slings to d = 54 mm

All pressing jaws and slings are suitable for press connections M-MM type with **SANHA**®, Geberit-Mapress/Yorkshire or Viega Profile.

For example:

SANHA ®	Service Plus pressing jaws and slings 12 mm to 54 mm (catalog No. 6930, 6932, 6940)
	Standard pressing jaws 12 mm to 35 mm (No. 6958)
Yorkshire	Yorkshire pressing jaws 12 mm to 35 mm Yorkshire pressing slings 42 mm to 54 mm
Geberit	Geberit-Mapress pressing jaws 12 mm to 54 mm Geberit-Mapress pressing slings 42 mm to 54 mm
Viega	Viega pressing jaws for Profipress and Sanpress 12 mm to 54 mm

Furthermore, pressing jaws from the following manufacturers can be employed, provided that these ensure the original press contours of the companies **SANHA**®, Geberit-Mapress/Yorkshire or Viega:

REMS	REMS pressing clamps V 12 mm to 54 mm, M 12 mm to 35 mm, SA 12 mm to 35 mm
Roller	Roller's pressing clamps V 12 mm to 54 mm, M 12 mm to 54 mm, SA 12 mm to 35 mm
Rothenberger	Vario-Press pressing jaws V 12 mm to 54 mm, M 12 mm to 54 mm

Press machines

Usable press machines to d = 54 mm

All press machines which satisfy the following requirements are suitable:

- Minimum crimping force: 30 kN
- Mandatory throughput control: After the pressing procedure has been initiated, it must be ensured that the machine cannot be taken from a possibly incompletely pressed connection point without further measures (actuation of the emergency switch or sim.). Alternatively, the manufacturer can verify the suitability of the press tool through a certification from a recognized testing institute.
- Bolt diameter of the pressing jaw retainer: 14 mm
- Minimum width of the pressing jaw retainer: 33 mm

Electronic pressing tools

Acceptable pressing jaws and slings for d = 12 mm to 108 mm

For example:

SANHA ®	SANHA ® pressing jaws and slings with intermediate jaws, catalog No. 6920, 6931.1, 6932 (d = 12 mm to 54 mm) for electronic press machine Type EFP 3/ AFP 3, ACO 3 and ECO 3/ ECO 301
	SANHA ® pressing slings and intermediate jaws, catalog No. 6933, 6931.1, 6931.2, 6931.3 (d = 64 mm to 108 mm) for electronic SANHA ® press machine ECO 3/ ECO 301
Yorkshire	Yorkshire pressing jaws and slings (d = 12 mm to 54 mm) for electronic press machines type ECO 3/ ECO 301 Yorkshire pressing slings and intermediate jaws Super Size (d = 76.1 mm to 108 mm) for Yorkshire press machines ECO 3/ ECO 301
Geberit	Geberit-Mapress pressing jaws and slings (d = 12 mm to 54 mm) for electronic press machines type EFP 3/ AFP 3, ACO 3 and ECO 3/ ECO 301 Geberit-Mapress pressing slings and intermediate jaws Super Size (d = 76.1 mm to 108 mm) for Geberit-Mapress press machines ECO 3/ ECO 301

Only the manufacturers are responsible for the quality of the pressing tools. Concerning the usability of press machines and jaws and slings not listed here, information can be found with our application consultation under 01494 / 484255

SANHA®